



Local public services: an international matrix survey on property rights and regulation

*In the framework of:
LO.RE.NET (Local Regulation Network)*

Franco Becchis and Elisa Vanin, Turin School of Local Regulation

LO.RE.NET Local Regulation Network

International network of experts on regulation of local public services

with the support of



CAMERA DI COMMERCIO
INDUSTRIA ARTIGIANATO E AGRICOLTURA
DI TORINO



- Launched in 2010
www.turinschool.eu/lorenet
- 2011 – 2012: first comparative survey on regulatory frameworks in 6 different local public services (water and wastewater services, urban household waste, local public transport, district heating, distribution of gas, distribution of electricity)
- Country experts. 16 Country experts involved up to now
- Output: comparative tables. Tables on water and wastewater services and on urban waste already available at:
www.turinschool.eu/lorenet/table/water
www.turinschool.eu/lorenet/table/waste

2/15



THE RATIONALE OF THE RESEARCH:

- Regulation (and research on regulation) of large network services vs. local services
- Lack of international networking on the local dimension of regulation
- Mayors and local regulators, wherever they are located, face a lot of similar challenges

3/15



THE SECTORS:



URBAN HOUSEHOLD WASTE

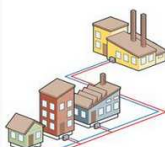


URBAN WATER AND SEWERAGE SERVICES



LOCAL PUBLIC TRANSPORTS

+ Local Welfare Policies forthcoming



DISTRICT HEATING



DISTRIBUTION OF NATURAL GAS



DISTRIBUTION OF ELECTRICITY

4/15



THE METHODOLOGY OF THE RESEARCH: SETTING THE QUESTIONS

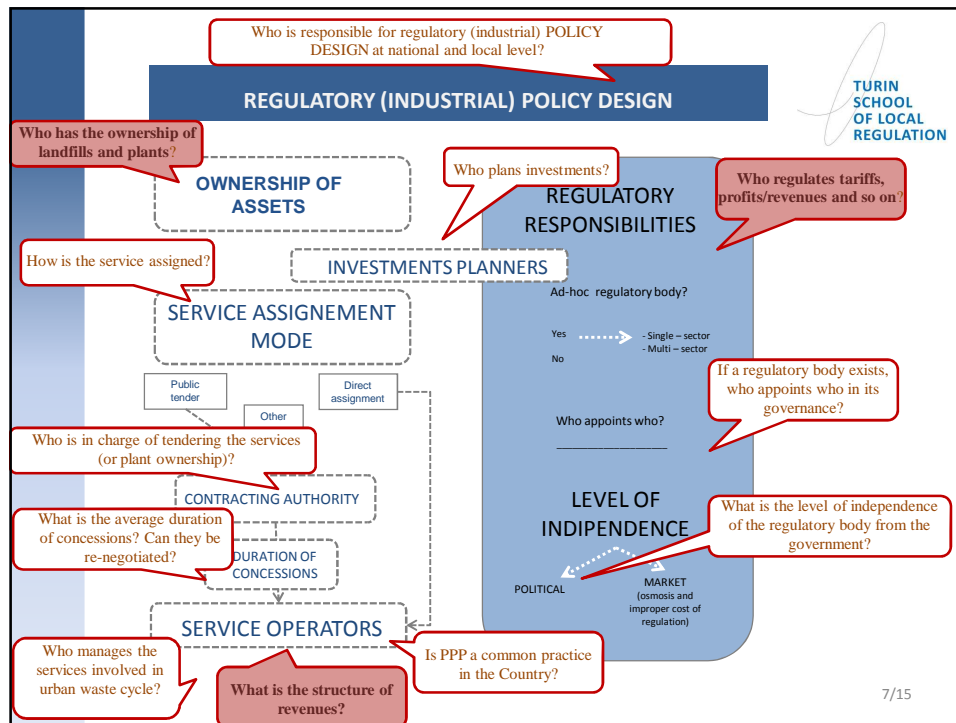
5/15

Setting the right questions and aligning incentives (water sector)



6/16

Topics analysed in 4 surveys: LORENET, OECD, DEXIA, CIRIEC



TURIN SCHOOL OF LOCAL REGULATION

THE OUTCOME

	Azerbaijan	Bulgaria	France	Latvia	Spain	Swe
1.6.1 Who regulates investments, tariffs, profits/revenues and so on?	The Tariff Council at the Ministry of Economic Development	Municipalities	If the service is managed by the local public authority, then the latter is in charge of regulation; in the case of delegation, the contract is the regulating instrument.	For waste management: local governments. For landfills: Public Utilities Commission of Latvia.	The tariffs of the plants are normally defined by the authorities in charge. At municipal level, Councils establish waste charges for waste collection and	Local governme
1.6.2 Who plans investments?	Ministry of Economic Development	Relevant Ministries	Ministry of Economic Development	Relevant Ministries	Local Authorities	
1.7.1 If a regulatory agency / department exists, who appoints who in its governance?						
1.7.2 What is the level of independence of the regulatory body from the government?						

+ 2nd level

	Azerbaijan	Azerbaijan 2nd level	Bulgaria	Bulgaria
1.6.1 Who regulates investments, tariffs, profits/revenues and so on?	The Tariff Council at the Ministry of Economic Development	The Tariff Council acts pursuant to authority granted to it by Presidential Decree (26 December 2005), the Regulations on the Tariff (Pricing) Council, and the Resolution by the Cabinet of Ministers (9 March 2006). The Tariff Council establishes the tariff methodology, approves the tariff level proposed by regulated companies (including but not limited to energy), proposes changes to the legal framework as it relates to pricing, and settles disputes regarding price regulation and tariff application. It is an executive authority, guided by the Constitution, laws, the President's decrees and executive orders, the Cabinet of Ministers' enactments and resolutions, and existing international agreements. It may act upon its own initiative within its tariff jurisdiction.	Municipalities	Municipalities services prices private companies; private company council is both lawmaker in the urban waste management; municipality is setting, according to the prepared by the The municipal price-setting of components, for "waste tax".
1.6.2 Who plans investments?	Ministry of Economic Development	Relevant Ministries	The private operators and the municipalities	Both private operators together with municipalities

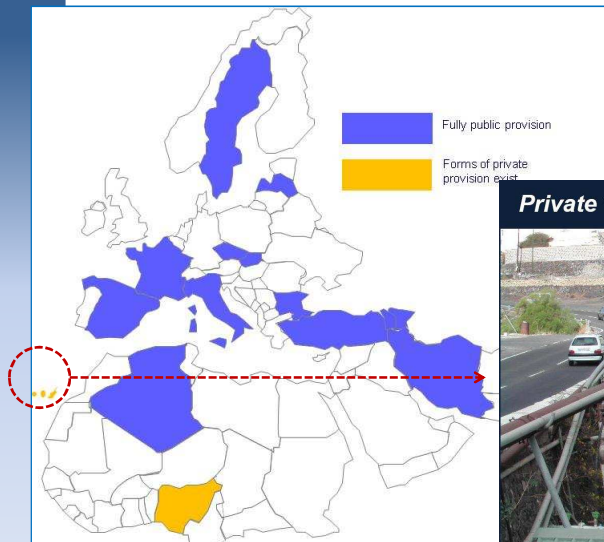
COUNTRIES ANALYZED

SOME RESULTS IN THE WATER AND WASTE SECTOR

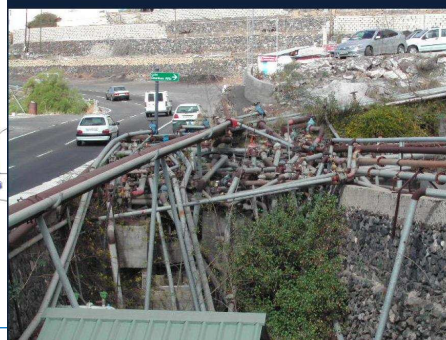
9/15

WATER - Public / private provision

TURIN
SCHOOL
OF LOCAL
REGULATION

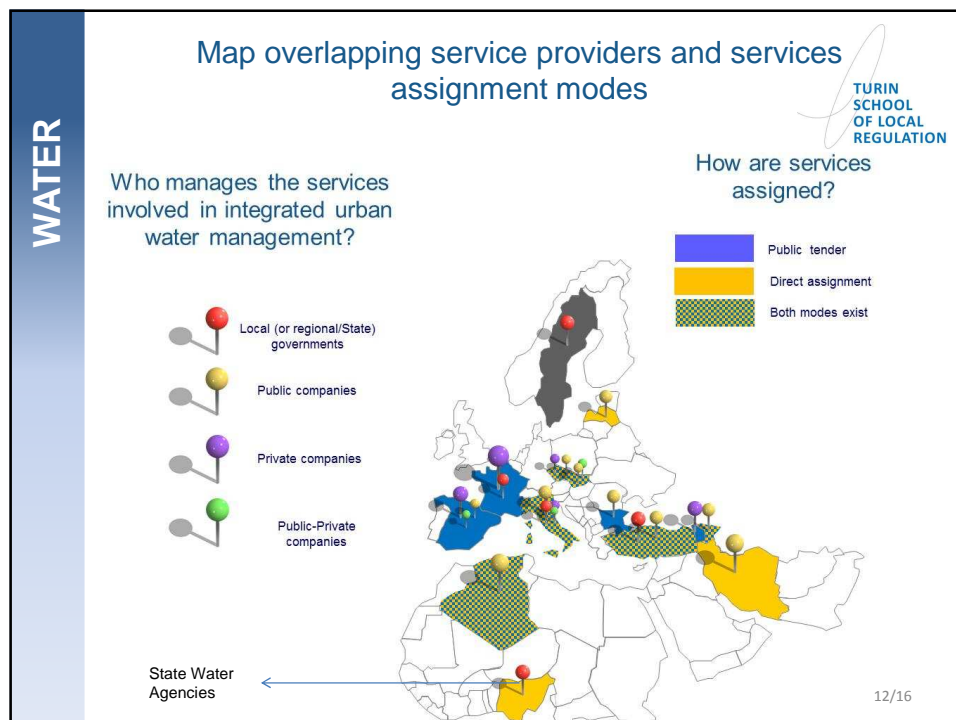
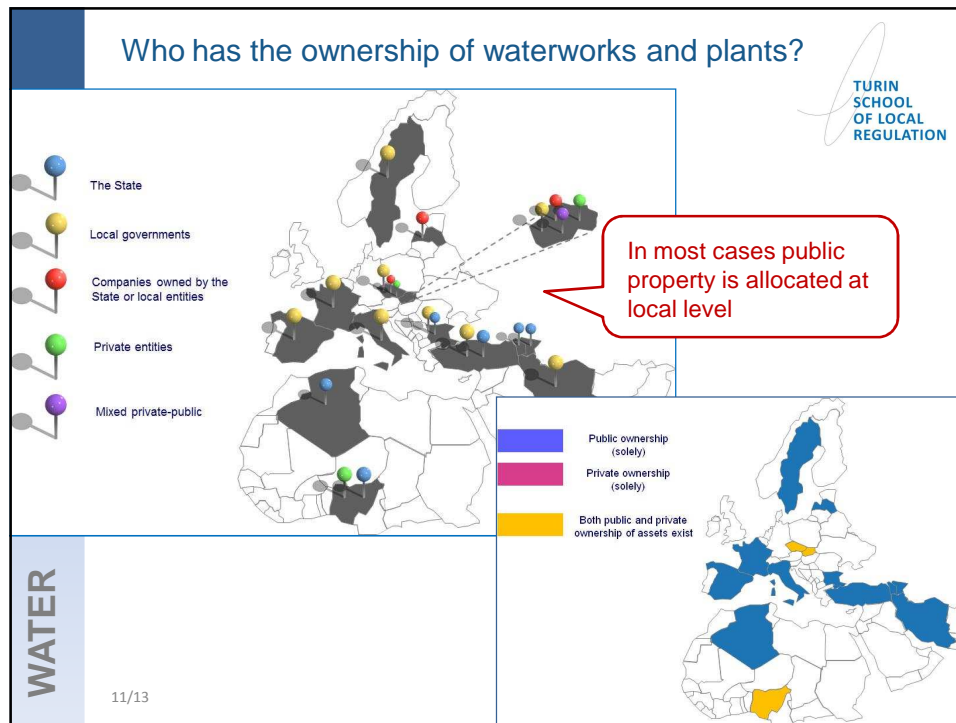


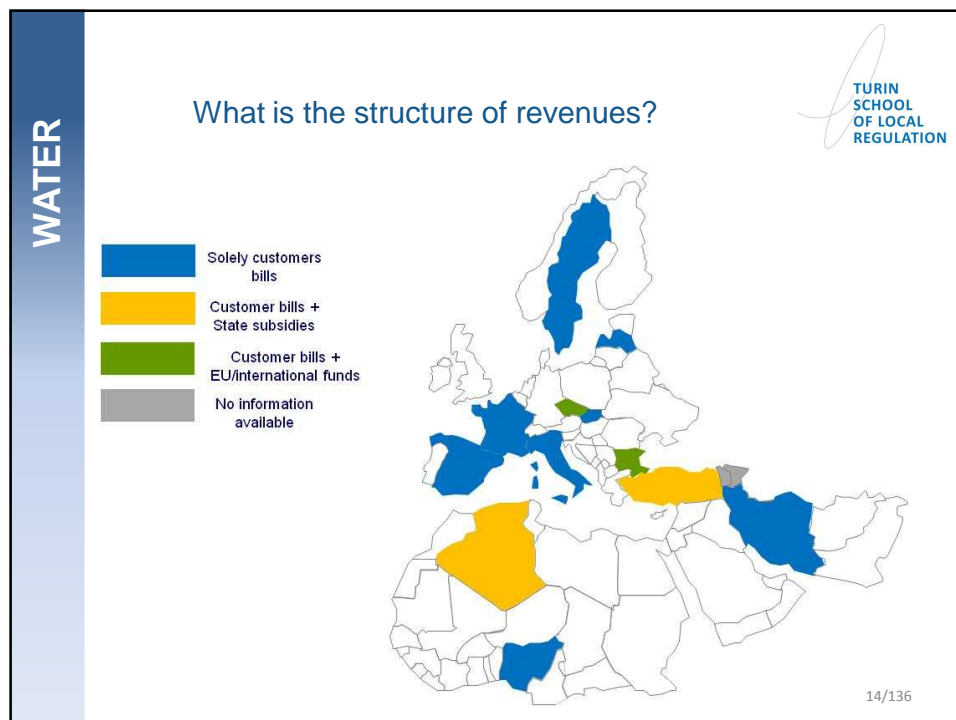
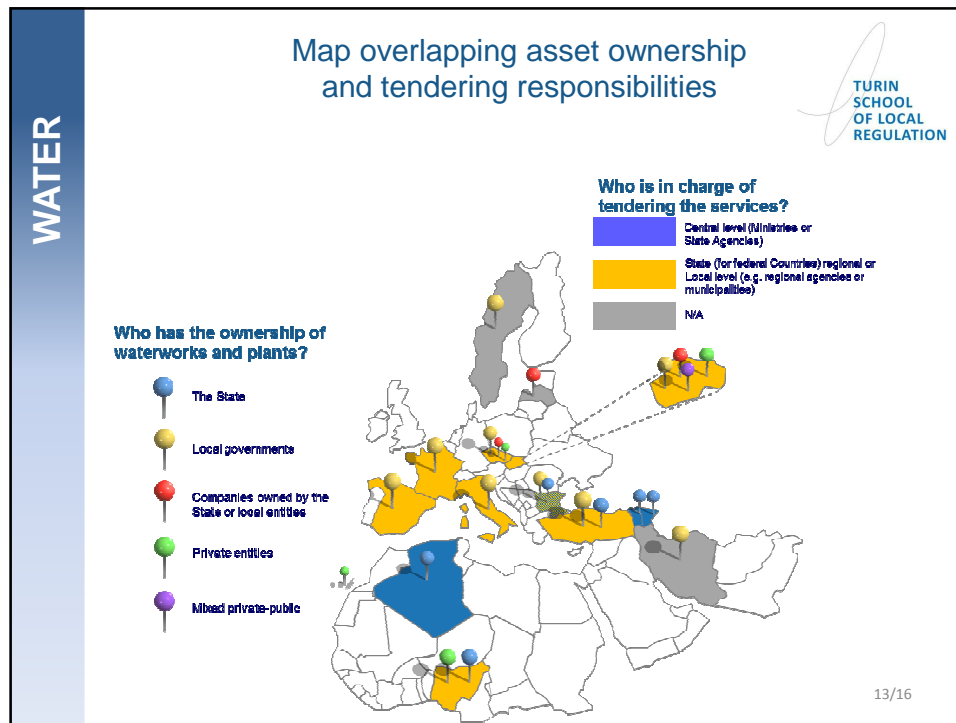
Private water distribution in Tenerife

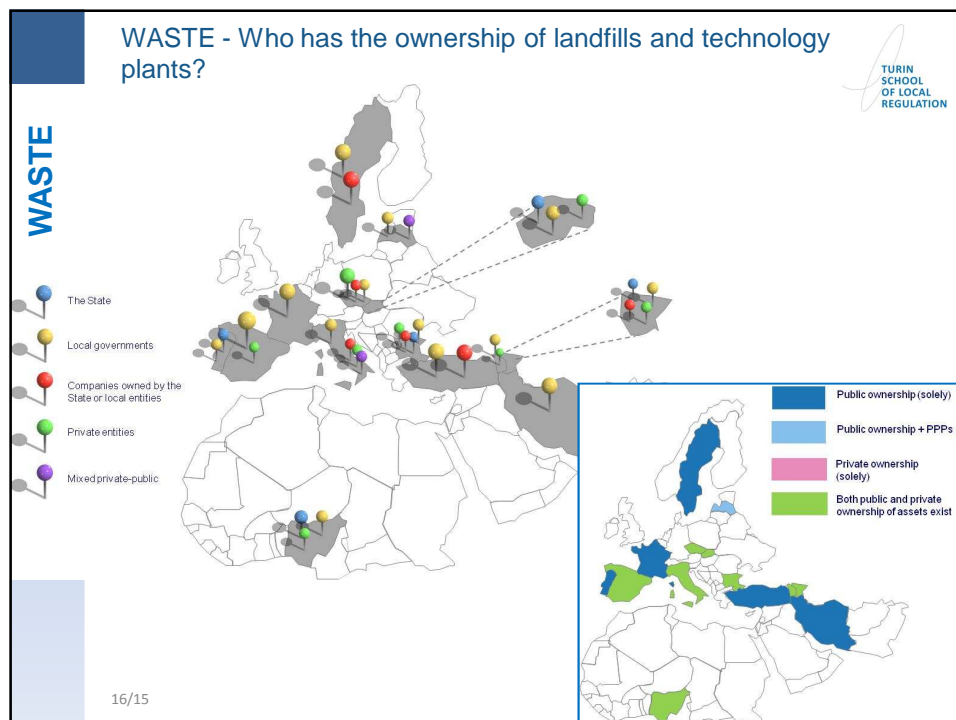
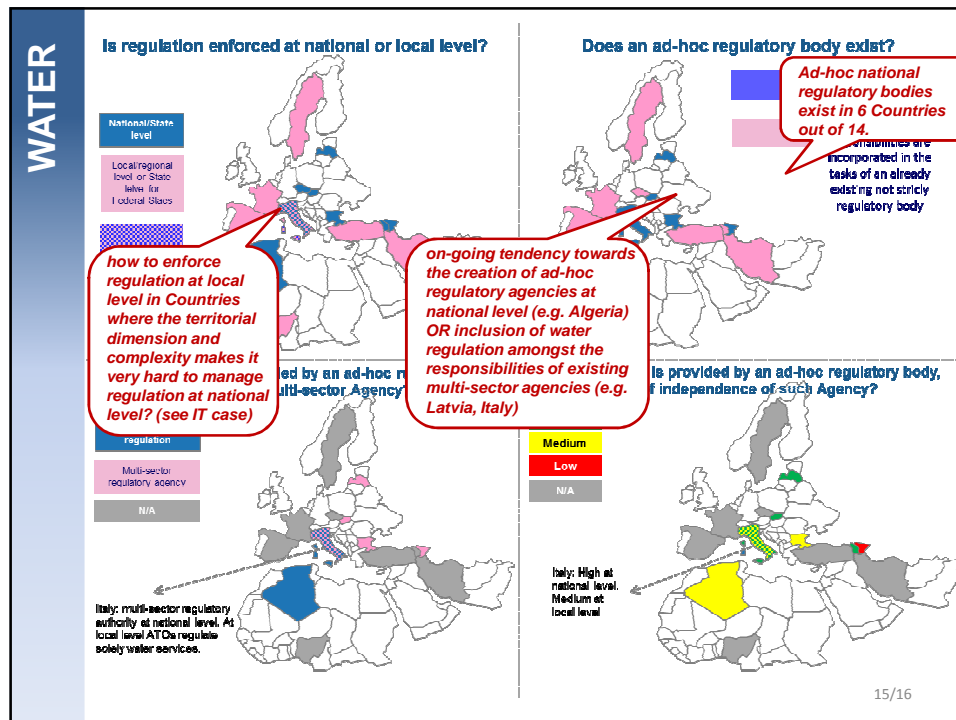


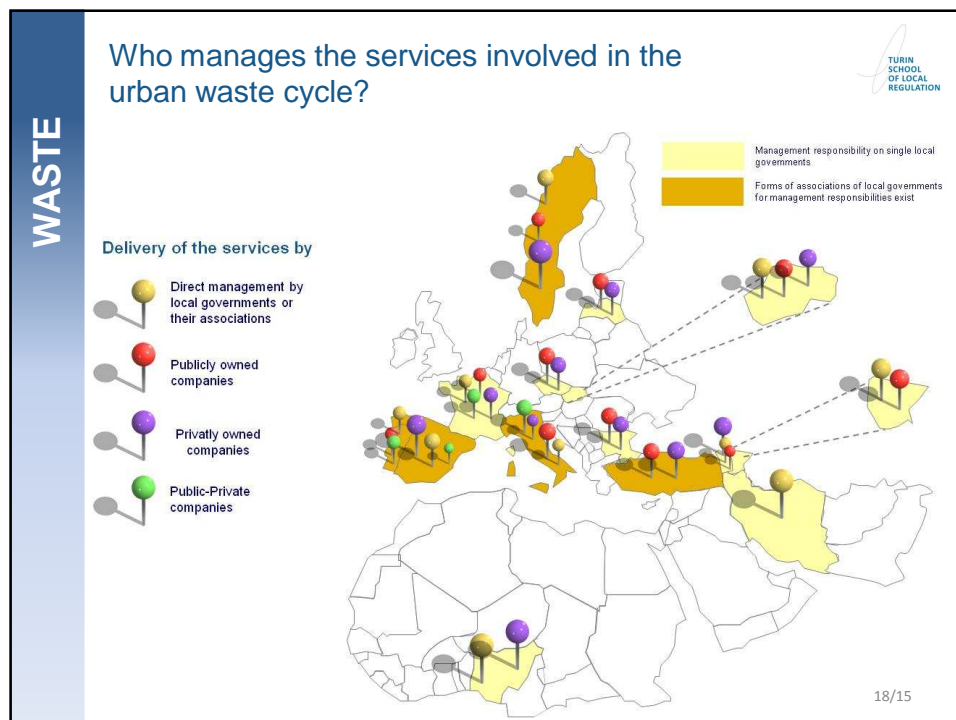
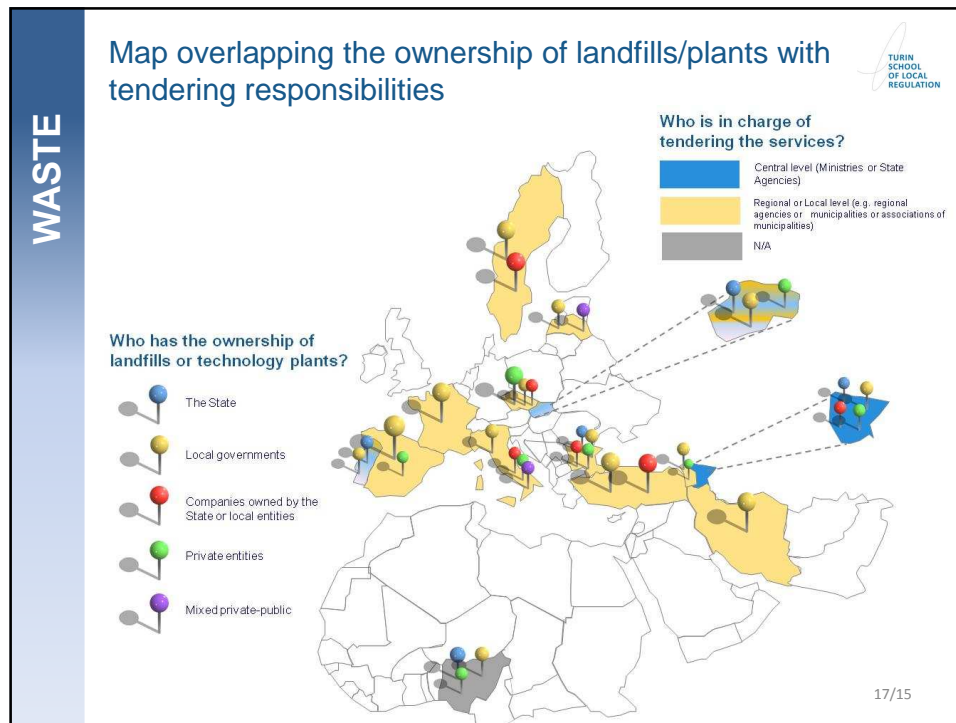
Hernández, M. 2004

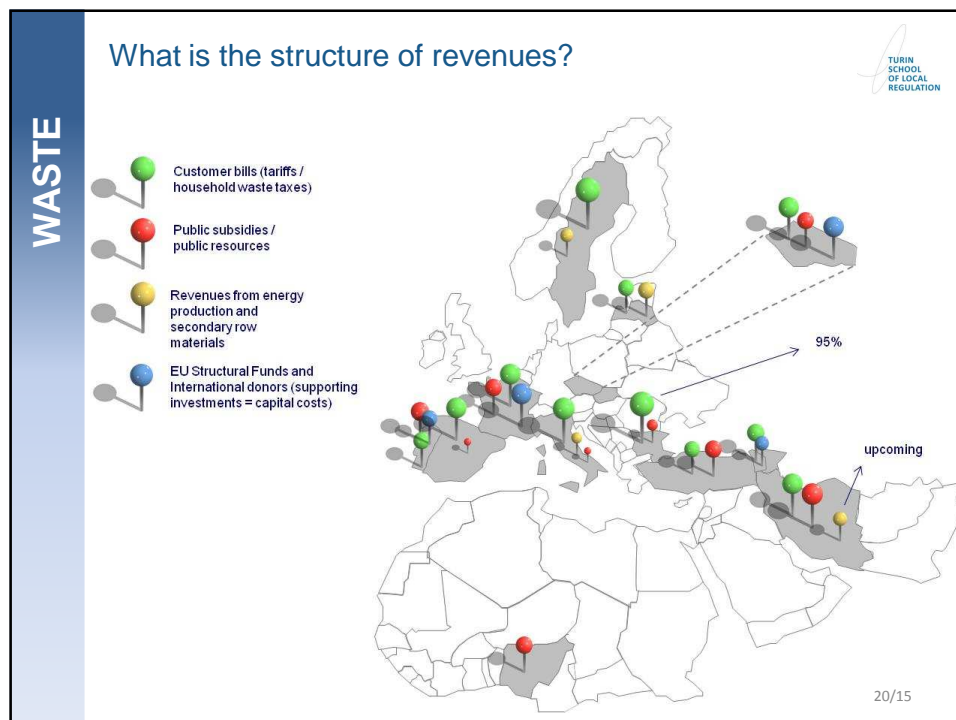
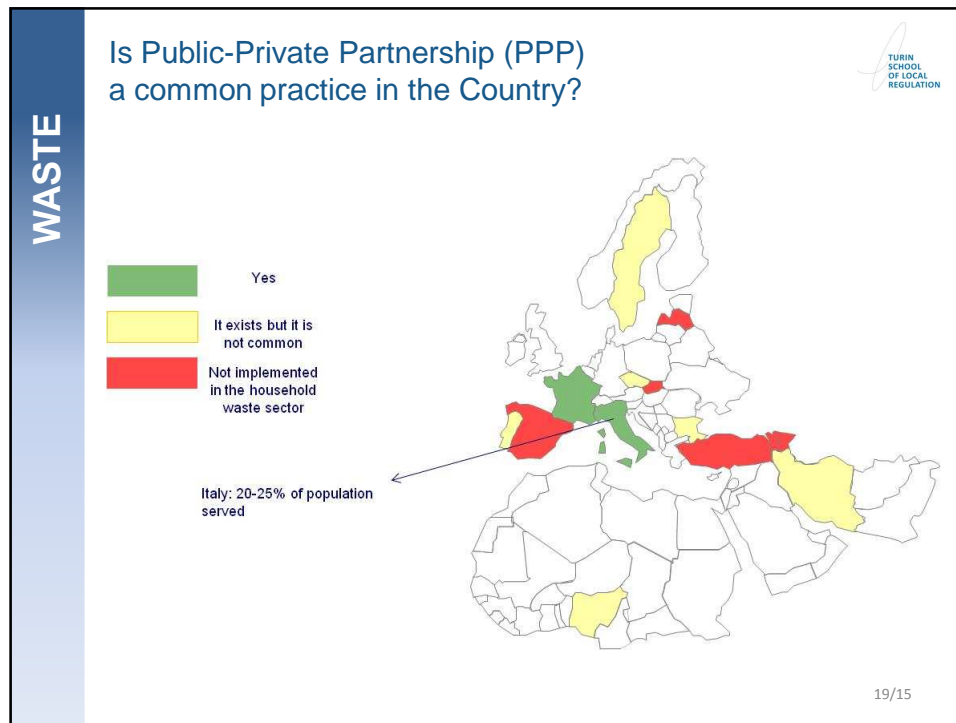
10/16





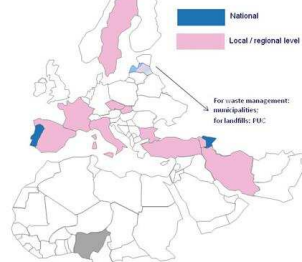




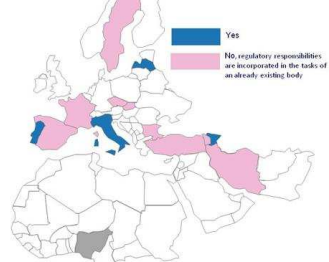


WASTE

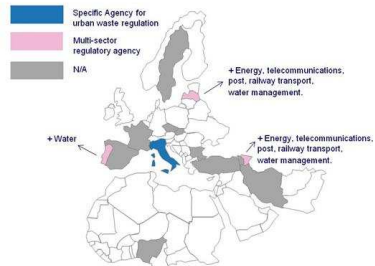
Is regulation enforced at national or local level?



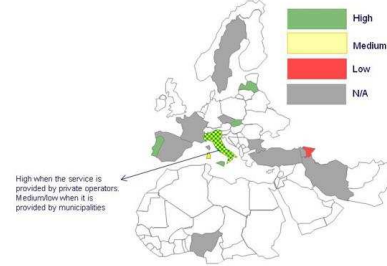
Does an ad-hoc regulatory body exist?



Where regulation is provided by an ad-hoc regulatory body, is it a single-sector or a multi-sector Agency?



Where regulation is provided by an ad-hoc regulatory body, what is the level of independence of such Agency?



21/15